

# Lubrano Ciavarra

This building was initially imagined as a pair of clasped hands intertwined, "knuckles" exposed. It is composed of four distinct and clearly recognizable parts, which we named "the Umbrella," "the School," "the House," and "the Wall." Lubrano Ciavarra

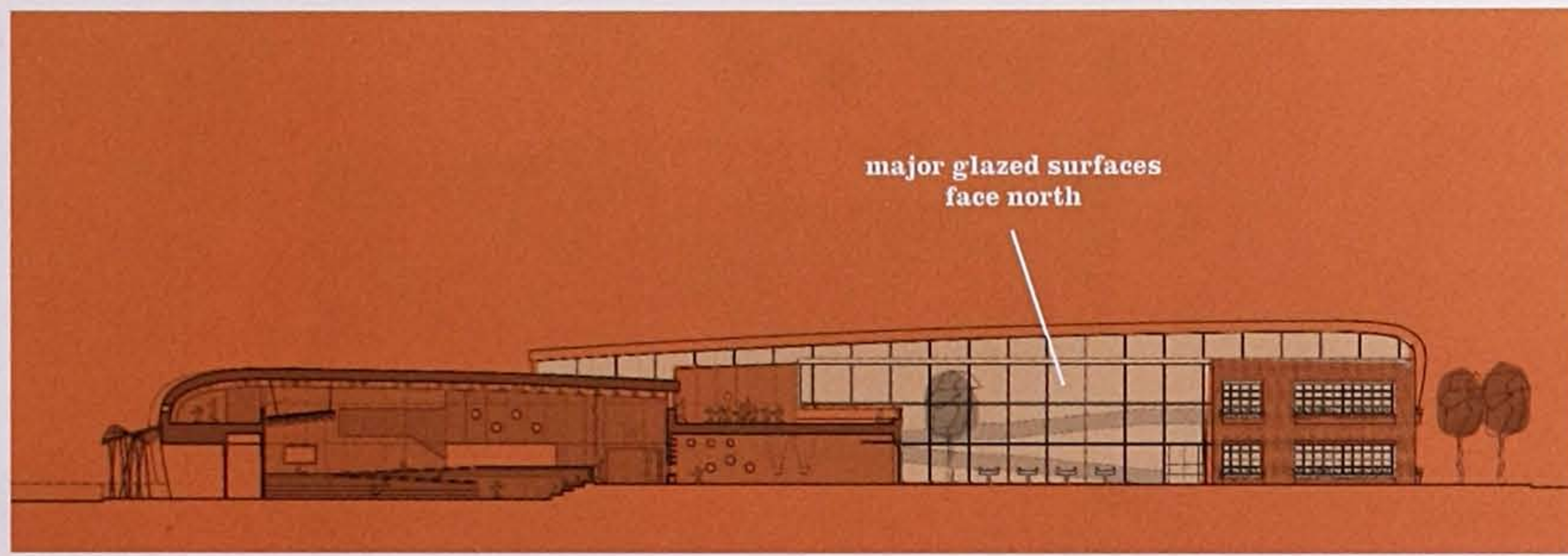
This aerial view, looking southeast, shows the school complex – containing a preschool and three separate small schools – occupying the southern portion of the site. In the northern part of the site the architects incorporated the existing ball field and playground and added a hard-surface basketball and soccer area, as

well as a freestanding gymnasium that could be used separately by the community as a recreational center, a youth center, or a senior center, as needed.

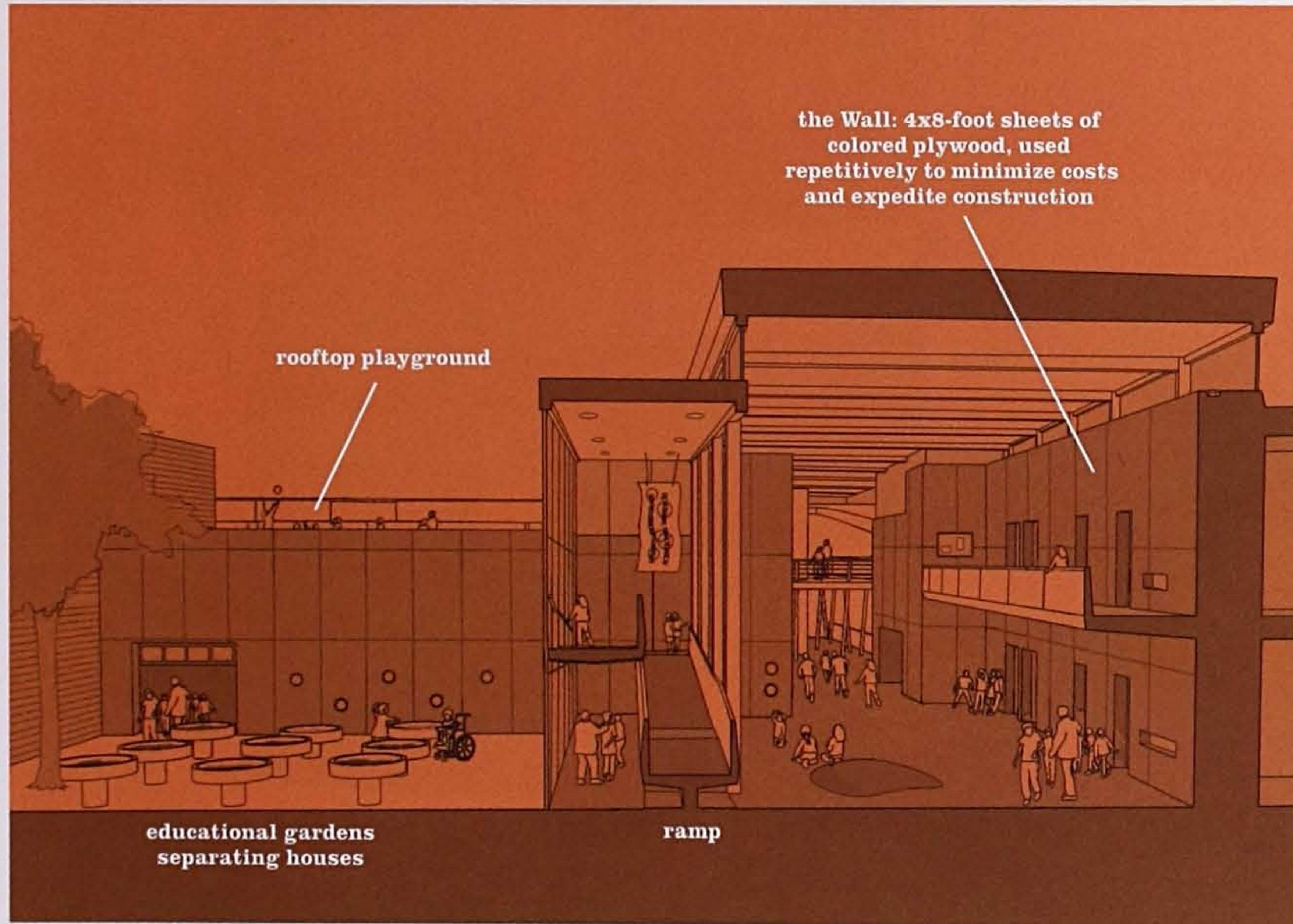








major glazed surfaces  
face north



the Wall: 4x8-foot sheets of  
colored plywood, used  
repetitively to minimize costs  
and expedite construction

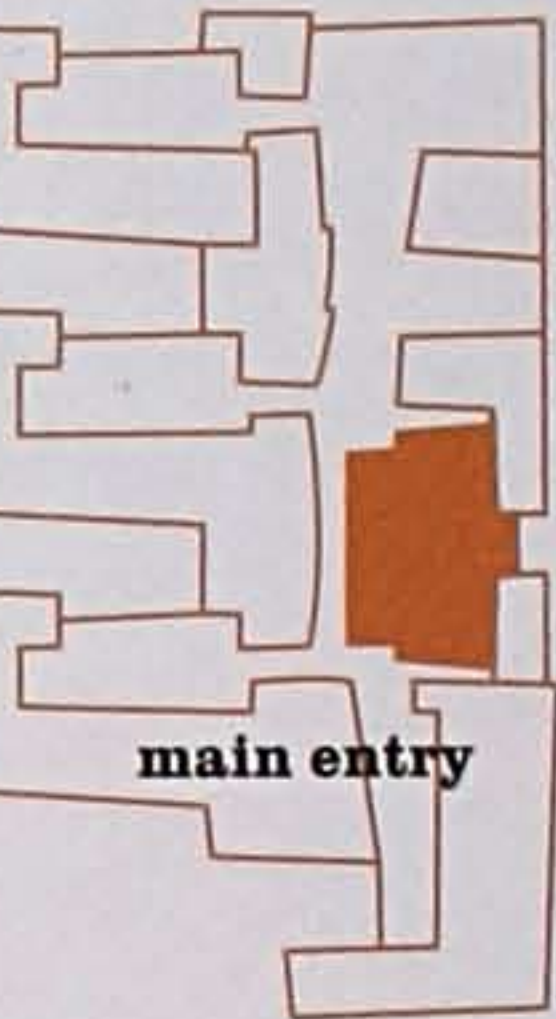
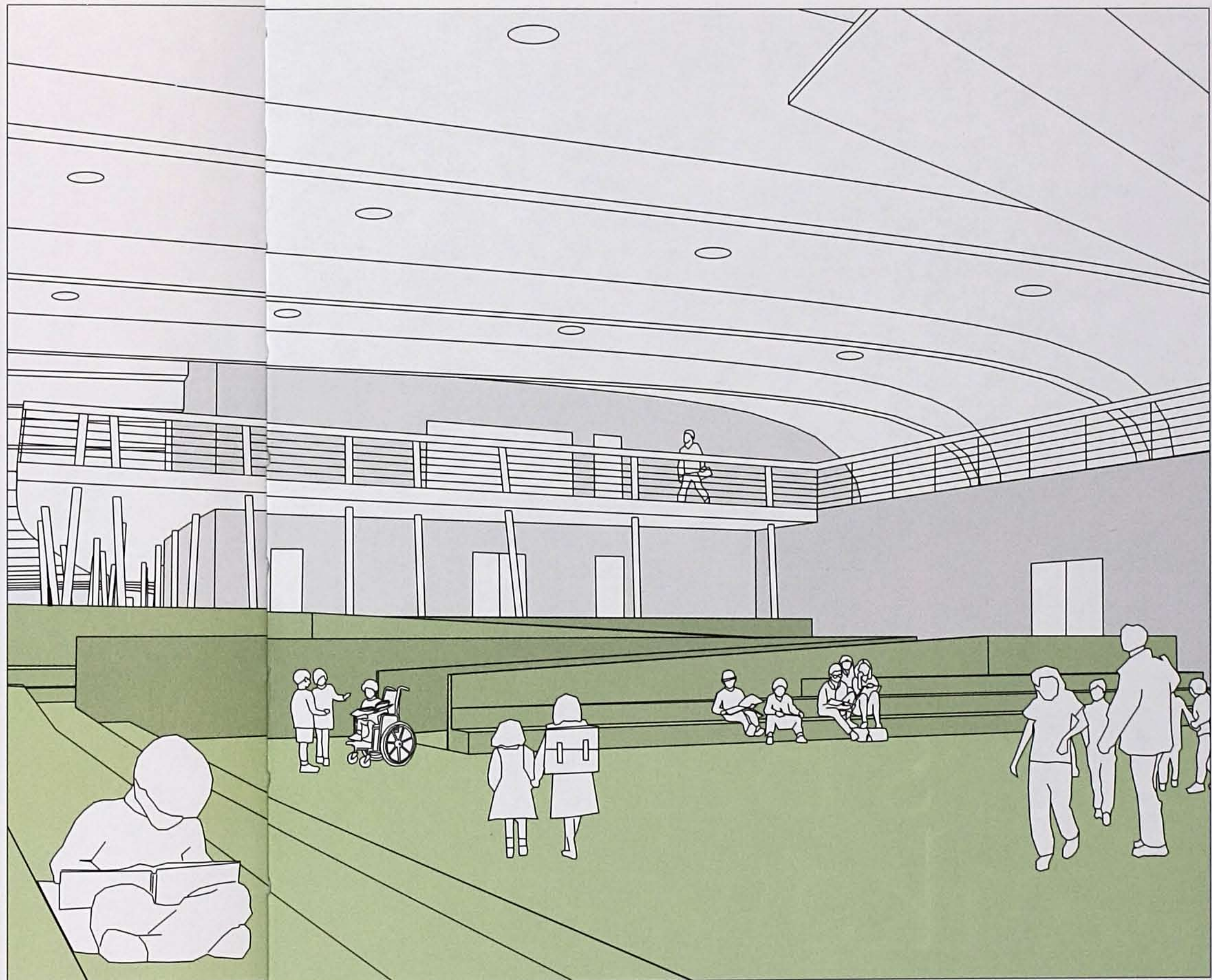
rooftop playground

educational gardens  
separating houses

ramp

To increase the building's energy efficiency and improve the quality of its environment, all major glazed surfaces, including those of the cafeteria and the ramps in the Houses, face north, to protect against excessive heat gain [top]. Operable windows are also used in all classrooms and administrative spaces to reduce energy loads whenever prevailing winds and moderate temperatures permit.

Each of the three two-story Houses, separated by educational gardens, is unified by an open ramp that links the multipurpose spaces and four classrooms on the main level that serve younger students with the four on the second floor for older students [bottom]. These Houses also have access to a private, rooftop hard-court playground for short, midday recess periods.



main entry

The main entry and assembly area is one of the most innovative components within the school. By combining ramps with bleacher-type seats, the architects created a

"holding area" for children in the morning and afternoon during the drop-off and pick-up periods. Children might do homework here while waiting for a ride or for an after-school activity to commence. At other times of the day this area might contain an entire house of children for an assembly.