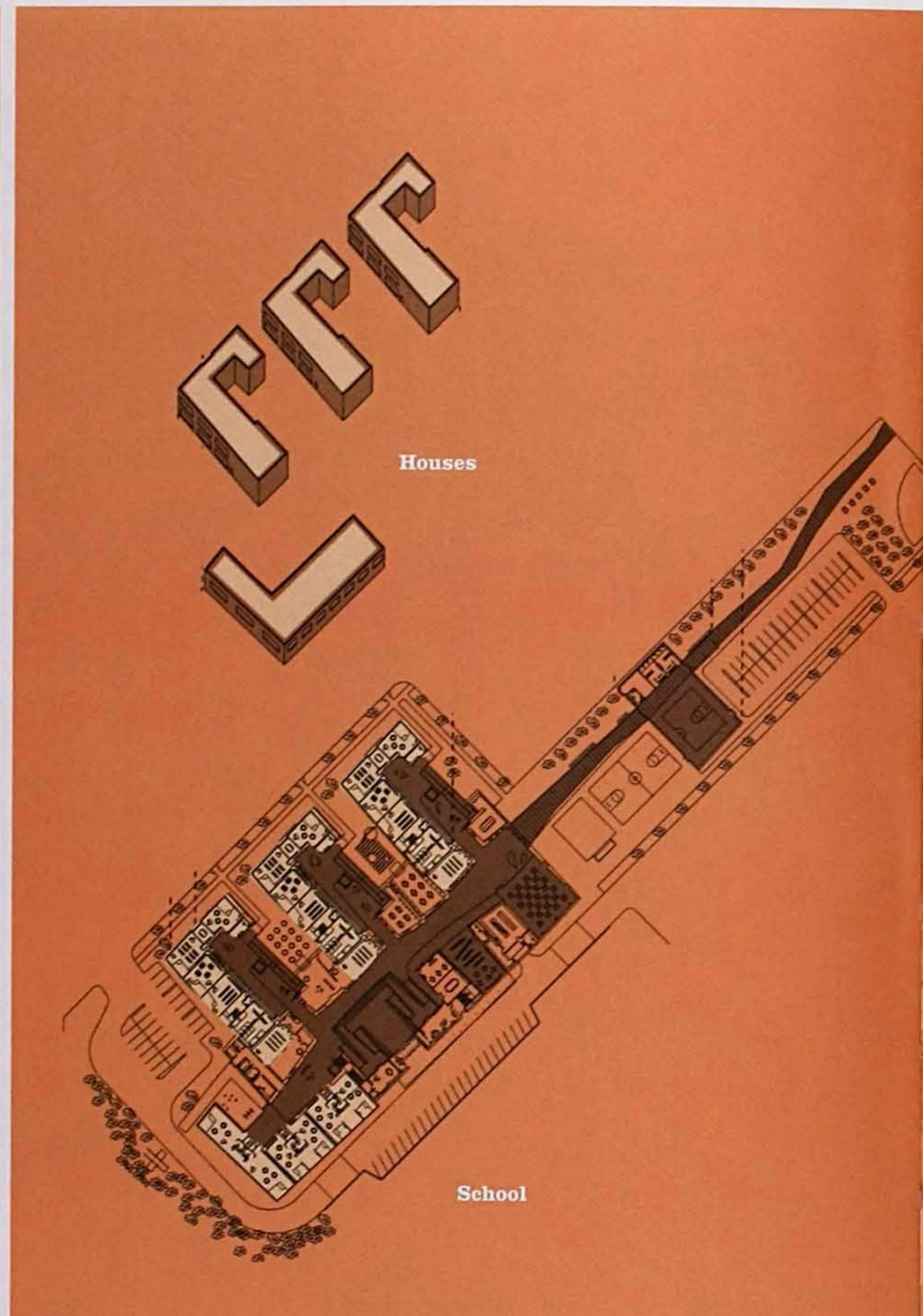
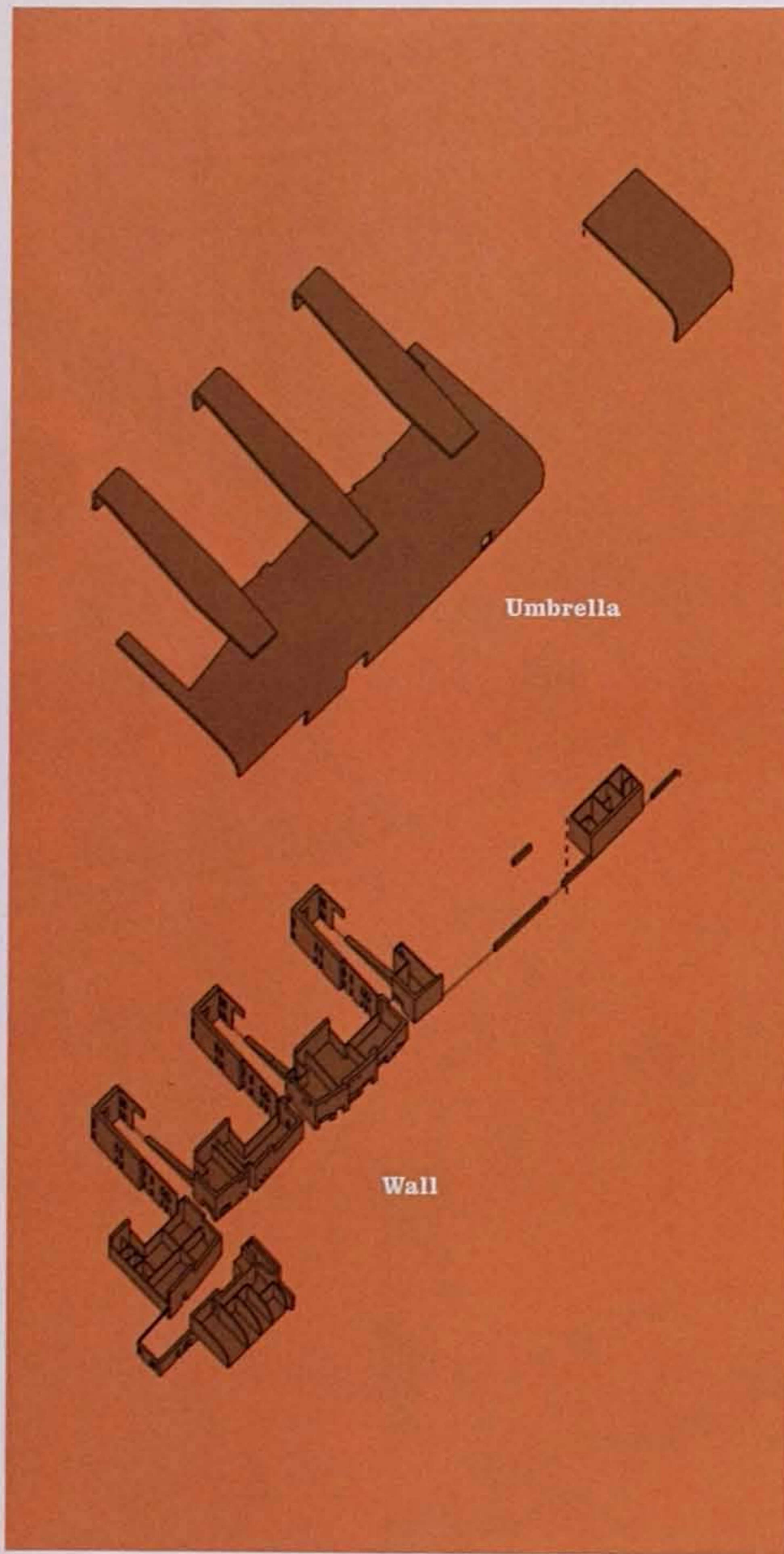


Lubrano Ciavarra

This building was initially imagined as a pair of clasped hands intertwined, "knuckles" exposed. It is composed of four distinct and clearly recognizable parts, which we named "the Umbrella," "the School," "the House," and "the Wall." Lubrano Ciavarra

This aerial view, looking southeast, shows the school complex – containing a preschool and three separate small schools – occupying the southern portion of the site. In the northern part of the site the architects incorporated the existing ball field and playground and added a hard-surface basketball and soccer area, as

well as a freestanding gymnasium that could be used separately by the community as a recreational center, a youth center, or a senior center, as needed.



The Umbrella is the building's wrapper or protective shell. Made of corrugated metal panels, the Umbrella unifies the four Houses that together constitute the school complex. The Wall weaves its way through the building, at some points expanding to accommodate special programmed spaces such as the sensory stimulation room, the discovery center, and the art, science, and music rooms. Each of the four Houses constitutes a school-within-the-school.

Finally, the School contains shared common spaces: the main entry and assembly area, the library, the dining center, and the gymnasium. The continuous space of the School fosters shared experiences for students, faculty, and parents during the days, and for other members of the community in the evenings. This multipurpose space also flows into each House, integrating most of the school's activities and all of its common facilities on one level.

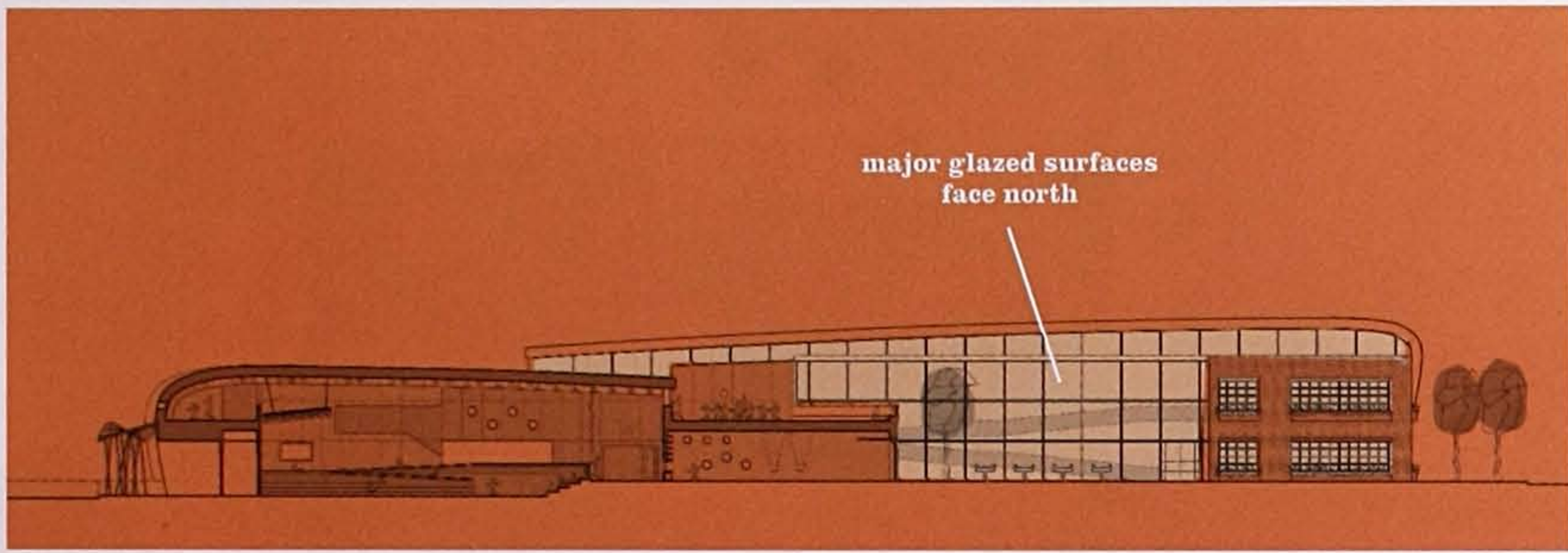
2.26 Finalists, North Side

The fourth House, entirely for the pre-kindergarten and kindergarten children, with direct access to the nursing facilities and the sensory stimulation room, is a single-story wing made up of six classrooms. The children in these classes also enjoy a common area as well as direct access to a small, protected, mat-covered playground. Each of the four Houses has its own administrative office that may serve as a visible security post at its exit.

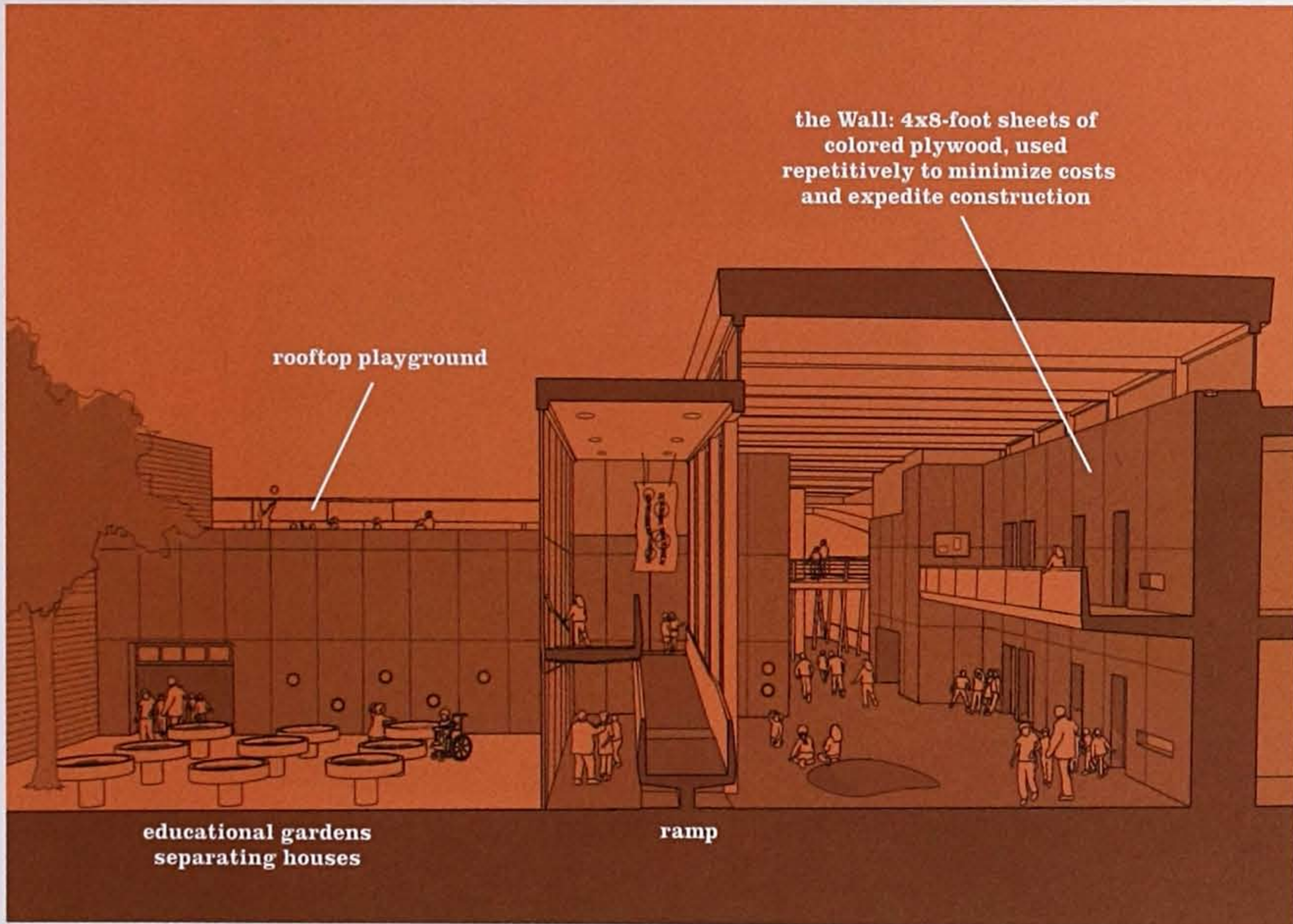
2.27 Lubrano Ciavarra



- 1 Main entry/assembly area
- 2 Pre-k/kinder-garten
- 3 Pre-k/k playground
- 4 Library
- 5 Sensory stimulation room
- 6 Art room
- 7 Science lab
- 8 Music room
- 9 Dining area
- 10 Small school/House 1
- 11 Small school/House 2
- 12 Small school/House 3
- 13 Discovery center
- 14 Bus drop-off



major glazed surfaces
face north



the Wall: 4x8-foot sheets of
colored plywood, used
repetitively to minimize costs
and expedite construction

rooftop playground

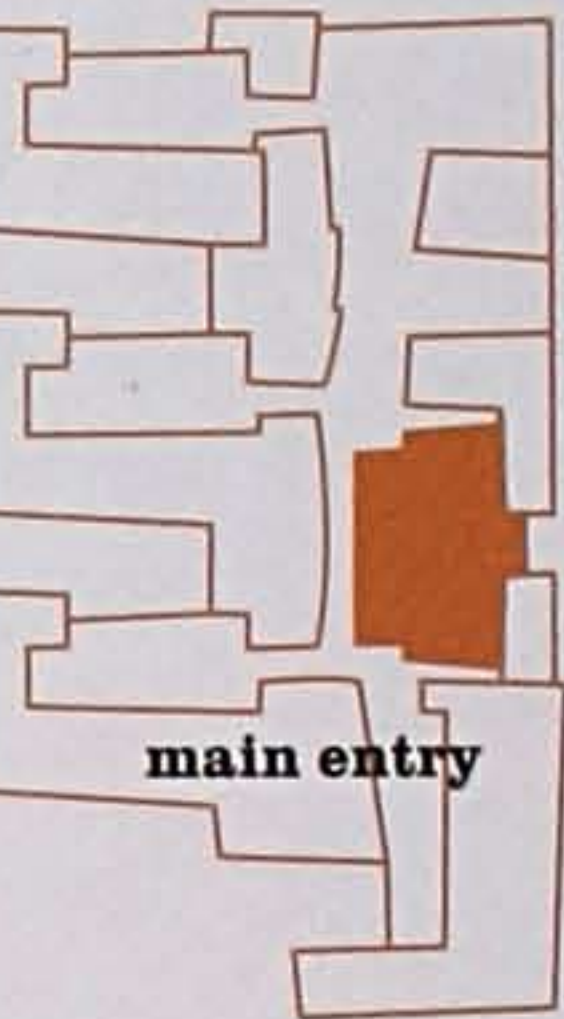
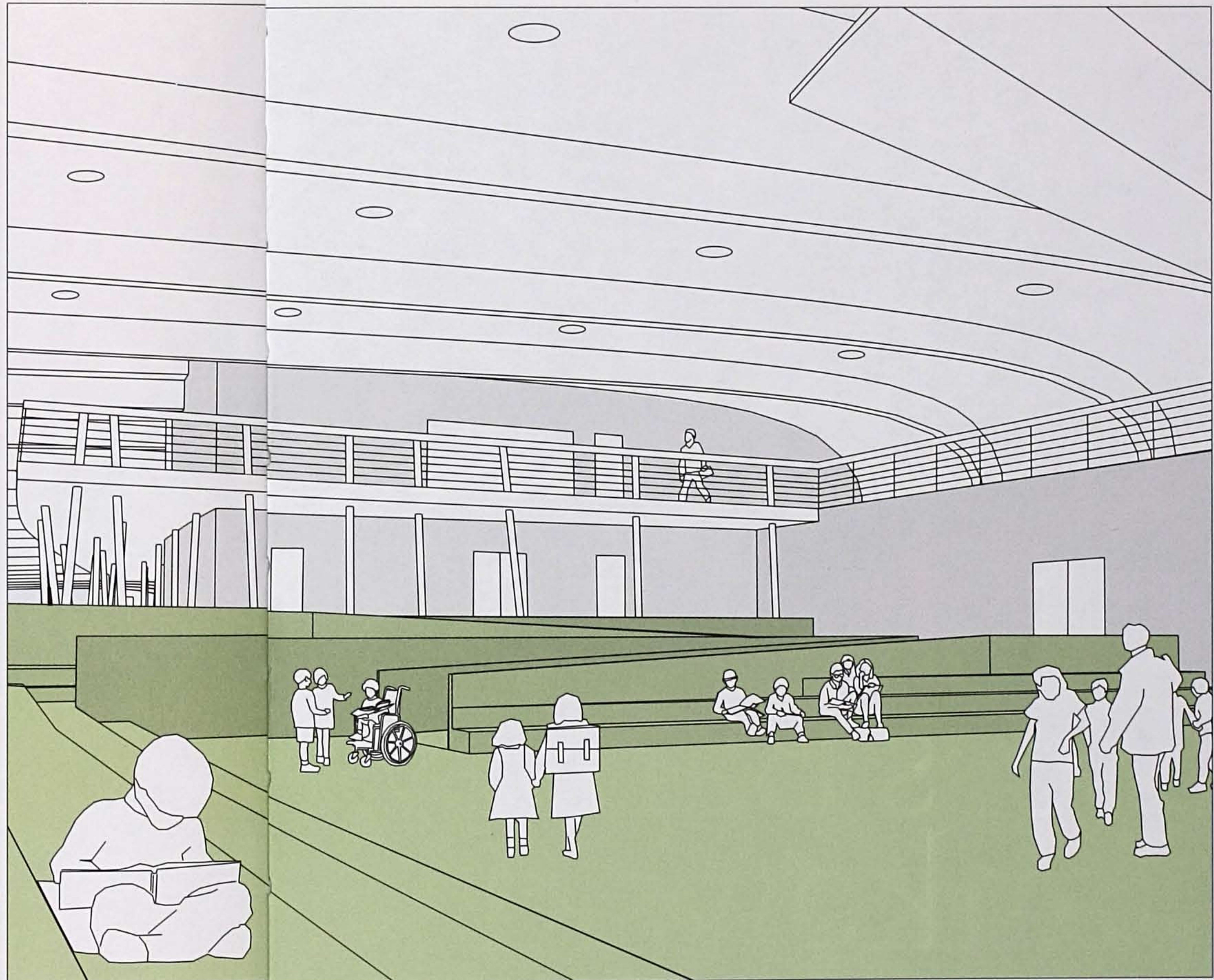
educational gardens
separating houses

ramp

To increase the building's energy efficiency and improve the quality of its environment, all major glazed surfaces, including those of the cafeteria and the ramps in the Houses, face north, to protect against excessive heat gain [top]. Operable windows are also used in all classrooms and administrative spaces to reduce energy loads whenever prevailing winds and moderate temperatures permit.

2.28 Finalists, North Side

Each of the three two-story Houses, separated by educational gardens, is unified by an open ramp that links the multipurpose spaces and four classrooms on the main level that serve younger students with the four on the second floor for older students [bottom]. These Houses also have access to a private, rooftop hard-court playground for short, midday recess periods.



main entry

The main entry and assembly area is one of the most innovative components within the school. By combining ramps with bleacher-type seats, the architects created a

2.29 Lubrano Ciavarra

"holding area" for children in the morning and afternoon during the drop-off and pick-up periods. Children might do homework here while waiting for a ride or for an after-school activity to commence. At other times of the day this area might contain an entire house of children for an assembly.